

- a) To determine if a machine exhibits intelligent behavior equivalent to that of a human
- b) To evaluate the performance of machine learning algorithms
- c) To assess the accuracy of natural language processing models
- d) To measure the computational complexity of AI systems

19- All generated AI tools have the same functions and act like each other
 a-true b-false

20- What does IoT stand for?

- a) Internet of Technologies b) Internet of Telecommunications
- c) Internet of Things d) Integrated Online Technology

21- Which wireless technology is commonly used for short-range communication in IoT devices?

- a) Bluetooth b) Wi-Fi c) LTE d) Zigbee

22- Which of the following is NOT a characteristic of cloud computing?

- a) On-demand self-service b) Broad network access
- c) Limited scalability d) Resource pooling

23- Which cloud computing service model provides users with development and deployment tools over the internet?

- a) Infrastructure as a Service (IaaS) b) Platform as a Service (PaaS)
- c) Software as a Service (SaaS) d) Function as a Service (FaaS)

24- Which cloud computing characteristic refers to the ability to rapidly and elastically provision and release resources?

- a) On-demand self-service b) Resource pooling
- c) Rapid elasticity d) Measured service

25- Amazone is one of cloud computing service providers

- a-true b-false

26- What does SaaS stand for in cloud computing?

- a) Software as a Service b) Storage as a Service
- c) Security as a Service d) Server as a Service

27- Which cloud computing characteristic ensures that users only pay for the resources they consume?

- a) On-demand self-service b) Broad network access
- c) Measured service d) Rapid elasticity

28- Which cloud deployment model is characterized by a dedicated infrastructure maintained for a single organization?

- a) Public cloud b) Private cloud
- c) Hybrid cloud d) Community cloud

29- Which cloud deployment model involves sharing computing resources between multiple organizations?

- a) Public cloud b) Private cloud
- c) Hybrid cloud d) Community cloud

30- Which of the following is NOT a common cybersecurity threat?

- a) Virus b) Trojan horse c) Firewall d) Worm

31- What is a DDoS attack?

- a) A type of malware that spreads through email attachments
- b) A social engineering attack that targets specific individuals within an organization
- c) A cryptographic protocol used to secure internet communications
- d) An attack in which multiple compromised systems are used to flood a target system with traffic

32- Which type of malware is specifically designed to spread across a computer and perform automated tasks?

- a) Worm b) Trojan c) viruse d) Spyware

33- Which cybersecurity measure can help protect against malware attacks by scanning and filtering network traffic?

- a) Firewall
c) Intrusion Detection System (IDS)
- b) Antivirus software
d) Virtual Private Network (VPN)
- 34-** Which type of malware disguises itself as legitimate software but performs malicious activities in the background?
a) Worm b) Virus c) Trojan d) Adware
- 35-** What is the primary purpose of spyware?
a) To encrypt files and demand ransom b) To steal sensitive information
c) To slow down computer performance d) To display unwanted advertisements
- 36-** What does the term "malware" stand for?
a) Malicious Software b) Malfunctioning Software
c) Malicious Hardware d) Malicious Firmware
- 37-** What is the purpose of a rootkit?
a) To encrypt files and demand ransom b) To steal sensitive information
c) To slow down computer performance
d) To gain unauthorized access and hide malicious activity
- 38-** Which term refers to a collection of infected computers controlled by a single entity?
a) Malware b) Botnet c) Adware d) Rootkit
- 39-** Which cybersecurity practice involves regularly backing up important data to prevent loss in the event of a malware attack?
a) Patch management b) Vulnerability scanning
c) Data encryption d) Data backup and recovery
- 40-** What is the term used to describe a program that records keystrokes without the user's knowledge?
a) Adware b) Spyware c) Ransomware d) Rootkit
- 41-** Which cybersecurity measure helps protect against malware by detecting and removing malicious software?
a) Intrusion Detection System (IDS) b) Antivirus software
c) Firewall d) Virtual Private Network (VPN)
- 42-** What is a blockchain?
a) A type of cryptocurrency b) A distributed ledger technology
c) A centralized database d) An online gaming platform
- 43-** What is a block in a blockchain?
a) A group of transactions b) A type of cryptocurrency
c) A digital signature d) A network of computers
- 44-** What is a smart contract in the context of blockchain technology?
a) A legally binding document
b) A computer program that automatically executes the terms of a contract
c) A type of cryptocurrency d) A blockchain wallet
- 45-** ChatGPT is considered as SAAS
a-true b-false
- 46-** Metaverse technology uses Blockchain and AI
a-true b-false
- 47-** We cannot use metaverse in Education field
a-true b-false
- 48-** Augmented reality (AR) is a technology that creates an immersive, computer-generated environment that can simulate physical presence and allow users to interact with the environment as if they were there.
a-true b-false
- 49-** Virtual reality (VR) is a technology that overlays digital information, such as images, videos, or data, onto the real world, enhancing the user's perception of their environment.

a-true

b-false

50- What is the metaverse?

- a) A virtual reality headset
- b) An augmented reality application
- c) A collective virtual shared space, created by the convergence of virtually enhanced physical reality and physically persistent virtual spaces
- d) A video game

51- How does the metaverse differ from traditional virtual reality environments?

- a) The metaverse is exclusively accessible through gaming consoles.
- b) The metaverse is not immersive.
- c) The metaverse is a shared, persistent virtual space where users can interact with each other and digital objects.
- d) The metaverse is limited to a single platform.

52- Metavers uses VR, AR and IOT technologuse But it doesn't use security technique

a-true

b-false

53- IOT technology can use cloud computing for processing collected data from the sensors

a-true

b-false

54- Artificial intelligence can be used in healthcare and education fields

a-true

b-false

55- Integrity is violated when there are any modifications on the data

a-true

b-false

56- In cloud computing, elasticity means scalability

a-true

b-false

57- Chess is one of the best examples of -----

a)self awareness

b) limited memory

c) strong AI

d)theory of mind

58- An embedded system is a microcontroller-based system which is designed to perform many tasks for any system

a-true

b-false

59- The interconnection between two computers can occur without switch

a-true

b-false

60- The main objective of Blockchain is securing data communication

a-true

b-false

61- It is easy to develop a metavers applications using generative ai

a-true

b-false

62- Authorized users can change in blocks in blockchain

a-true

b-false

63- All information technologies are compatible

a-true

b-false

64- There is no difference between cloud computing models

a-true

b-false

65- Metaverse applications doesn't often utilize AI technologies

a-true

b-false



TANTA UNIVERSITY

FACULTY OF COMPUTERS AND INFORMATICS

EXAMINATION FOR (LEVEL ONE)

COURSE TITLE: ELECTRONICS

COURSE CODE:

DATE: 25 -3-2024

B

TOTAL ASSESSMENT MARKS: 25

TIME ALLOWED: 1 HOUR

1- Determine the total charge entering a terminal between $t = 1s$ and $t = 2s$ if the current passing the terminal is $i = (3t^2 - t) A$.

A- 17.5 C

B- 3.5 C

C- 5.5 C

D- 7 C

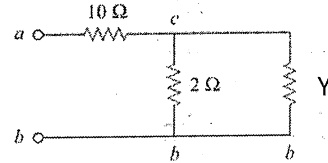
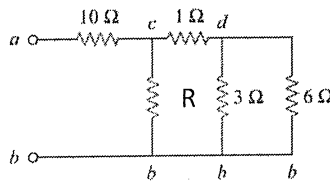
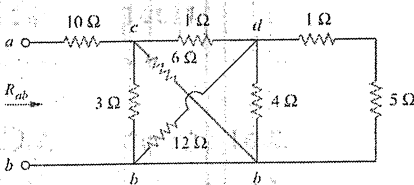
2- Find the power delivered to an element at $t = 3 ms$ if the current entering its positive terminal is $i = 5 \cos 60\pi t A$, and the voltage is $v = 3di/dt$

A- $4.5 \pi \sin 60\pi t \cos 60\pi t W$

B- $75 \cos 60\pi t W$

B- $75 \cos^2 60\pi t W$

D- $-4.5 \pi \sin 60\pi t \cos 60\pi t KW$



3- The value of the resistor R is

A- 4

B- 3.5

C- 5.5

D- 2

4- The value of the resistor Y is

A- 1

B- 3

C- 5.5 C

D- 7

5- The node voltages V_1 is

A- 2.1

B- -2

C- 4.8

D- -4

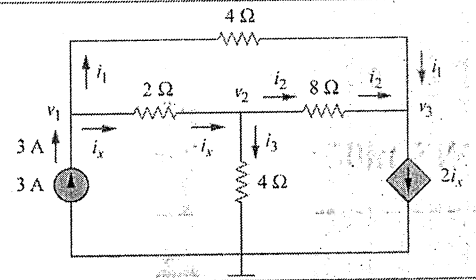
6- The node voltages V_2 is

A- 28

B- -28

C- 2.4

D- 4.5



Find the Thevenin equivalent of the following circuit if $v_o = I$ and

$$i_3 = -1/6 A$$

7- R_{th} is

A- 2

B- 4

C- 6

D- 8

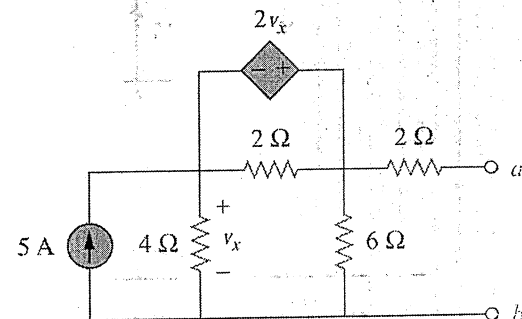
8- The v_{th} is

A- 20

B- 15

C- 25

D- 30



Find the value of R_2 , and V_0 by using source transformation

9- R_2

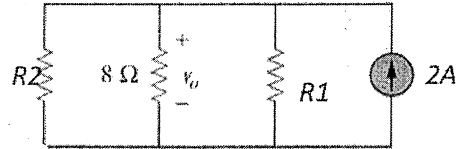
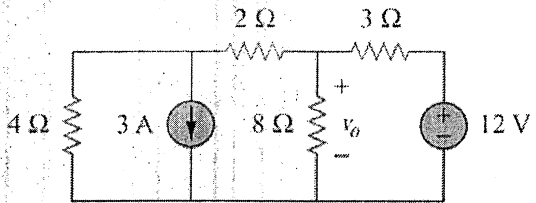
10- V_0

A- 5

B- 6

C- 3.2

D- 2.3



Good luck

Dr. Nancy Elhefnawy

Course Title: Math 2
Course Code: MA 113
Time: 1 Hour
Date: 23 - 3 - 2024



Arab republic of Egypt
Ministry of Higher Education
Tanta University
Faculty of Computers and Information
Science

Midterm Exam – 2nd Term 2023/2024

Total Assessment Marks: 20

Answer the following questions

1. Find all partial derivatives up to second order ($f_x, f_y, f_{xx}, f_{xy}, f_{yy}$) for the function:

$$f(x, y) = (x^2 + 3x) \sin(y)$$

2. Prove that the equation $4xy dx + (2x^2 + 3y) dy = 0$ is exact and obtain its solution.

3. Use homogeneous differential equation to solve the following differential equation

$$(y - x) \frac{dy}{dx} = 2x + y$$

4. Use linear differential equation to solve the following differential equation

$$(x + 1) \frac{dy}{dx} - 2y = (x + 1)^3$$